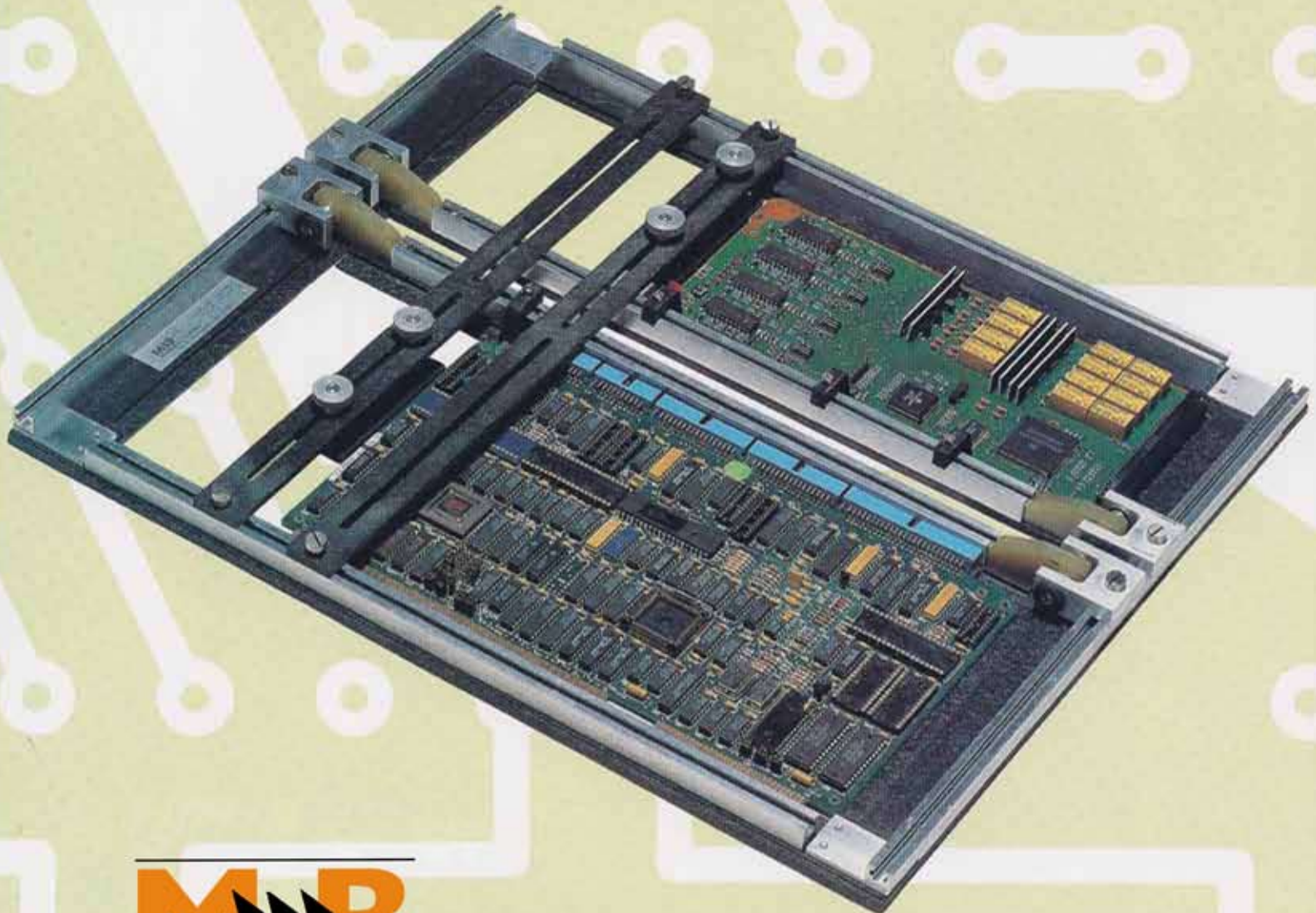
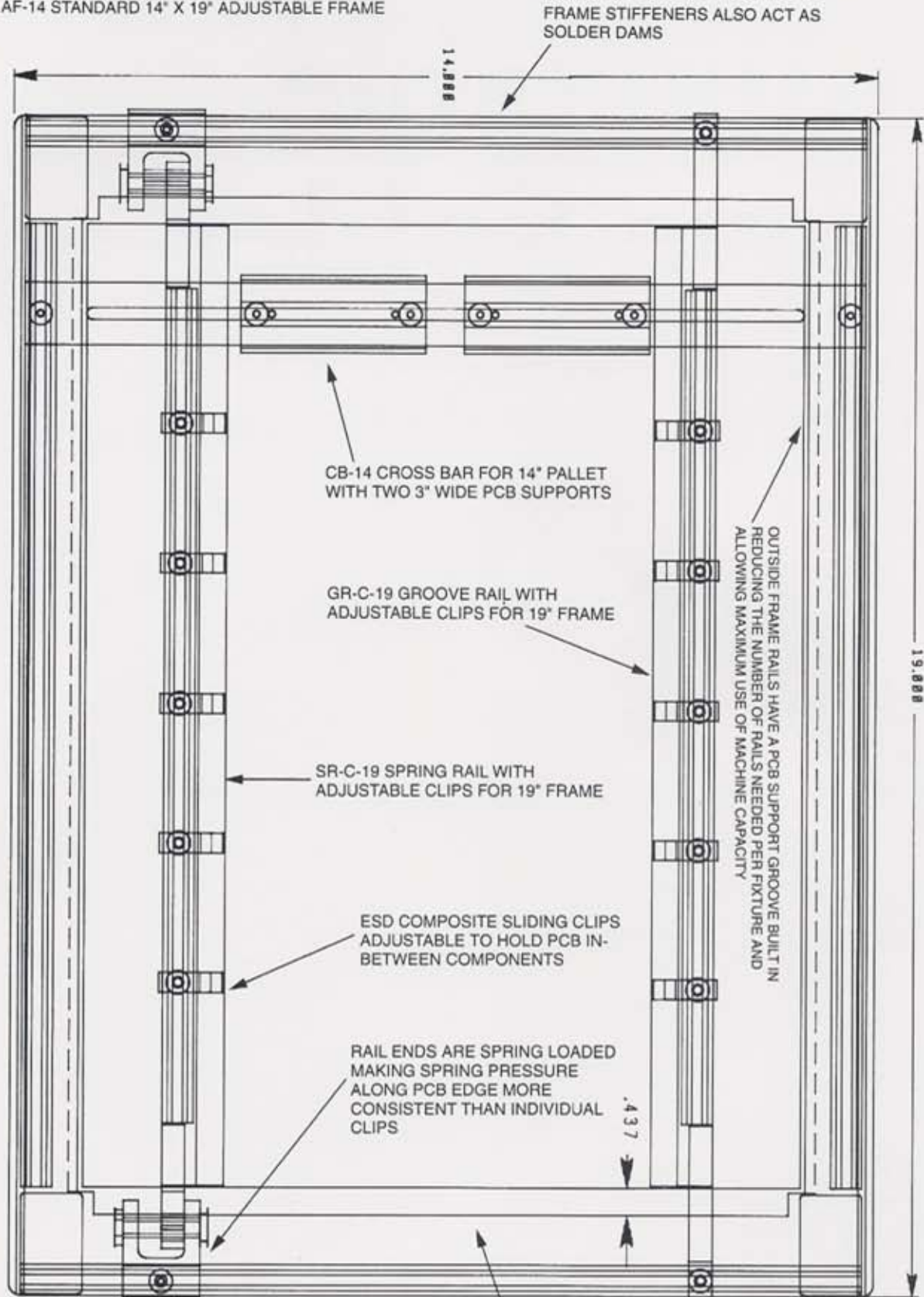


Adjustable Wave Solder Fixtures...



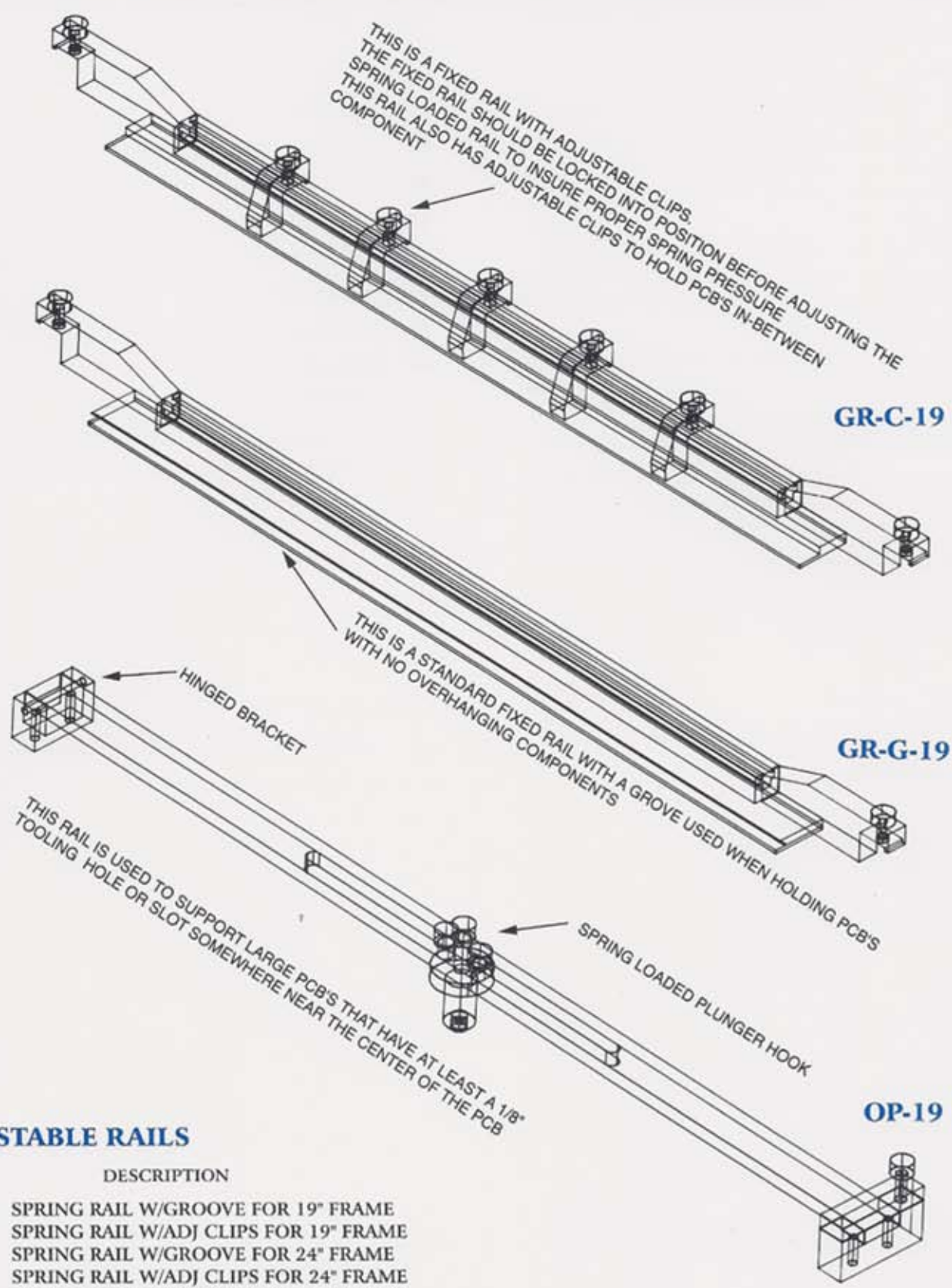
**TWENTY YEARS OF SOLDER FIXTURE DESIGN EXPERIENCE NOW AVAILABLE
IN THE FORM OF A TOP QUALITY, COST EFFECTIVE, ADJUSTABLE FIXTURE.**

AF-14 STANDARD 14" X 19" ADJUSTABLE FRAME



ALL STAINLESS HARDWARE IS CAPTIVE MEANING IT CANNOT BE SEPARATED FROM THE UNIT IN ADDITION TOOLS ARE NOT REQUIRED TO MAKE ADJUSTMENTS

7/16" CLEARANCE CAN BE USED FOR GOLD FINGER MASKING OR CONNECTOR CLEARANCE



ADJUSTABLE RAILS

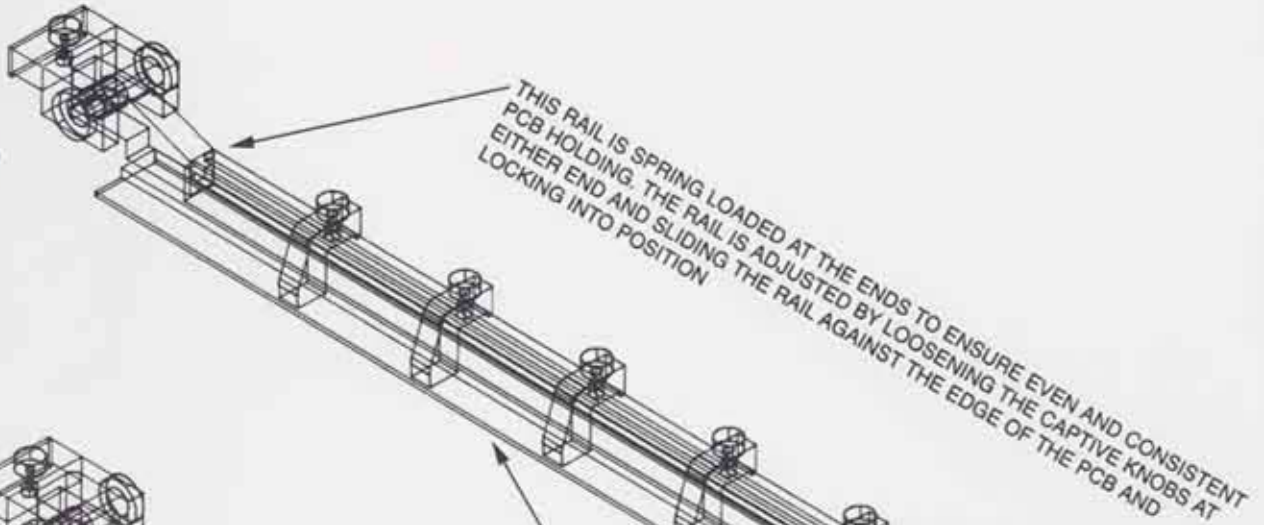
PART#	DESCRIPTION
SR-G-19	SPRING RAIL W/GROOVE FOR 19" FRAME
SR-C-19	SPRING RAIL W/ADJ CLIPS FOR 19" FRAME
SR-G-24	SPRING RAIL W/GROOVE FOR 24" FRAME
SR-C-24	SPRING RAIL W/ADJ CLIPS FOR 24" FRAME
GR-G-19	GROOVE RAIL W/GROOVE FOR 19" FRAME
GR-C-19	GROOVE RAIL W/ADJ CLIPS FOR 19" FRAME
GR-G-24	GROOVE RAIL W/GROOVE FOR 24" FRAME
GR-C-24	GROOVE RAIL W/ADJ CLIPS FOR 24" FRAME

OVERHEAD PICKUP BARS

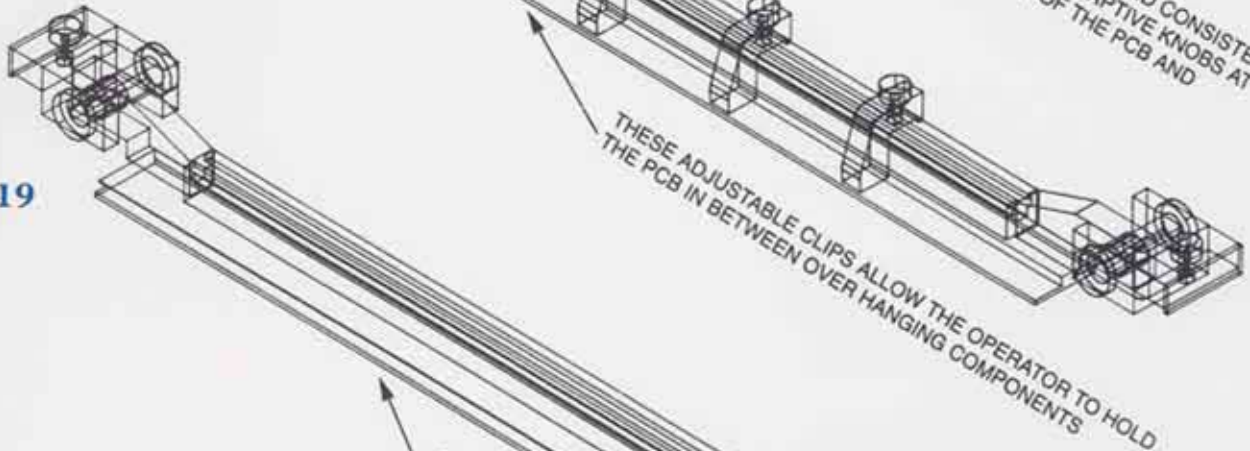
OP-19 OVERHEAD PCB SUPPORT 1/8" HOLE REQUIRED

SOLDER RAILS AND ACCESSORIES

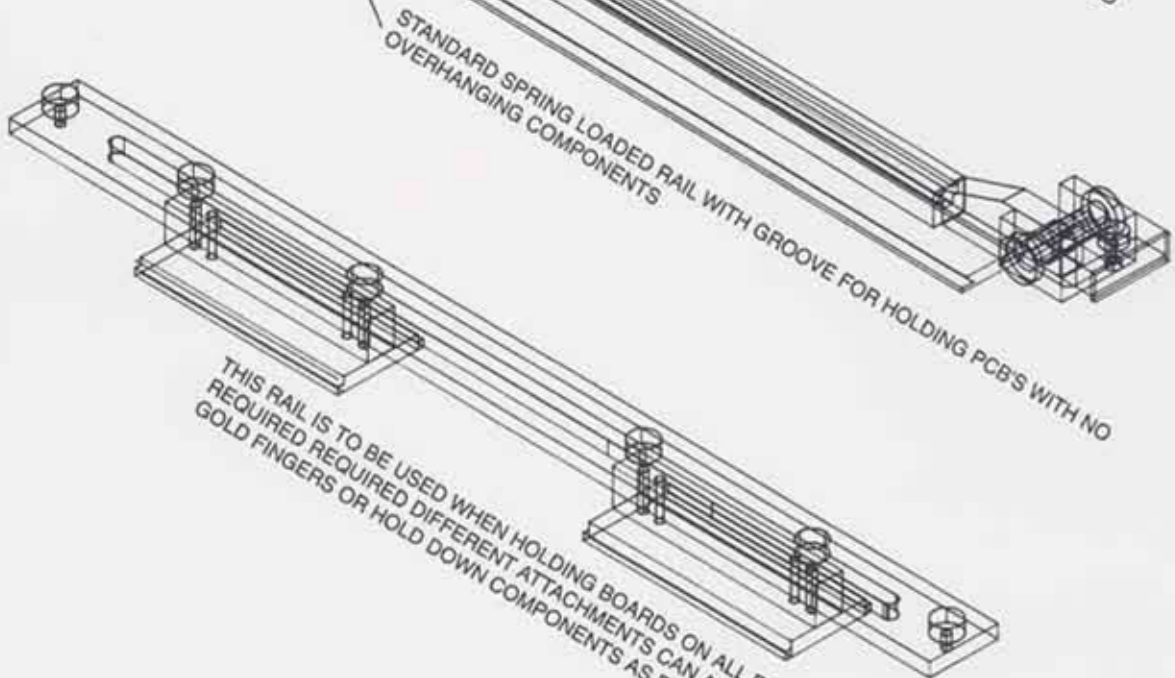
SR-C-19



SR-G-19



CB-14



CROSS BARS

PART#	DESCRIPTION
CB-12	CROSS BAR W/TWO 3" PCB SUPPORTS
CB-14	CROSS BAR W/TWO 3" PCB SUPPORTS
CB-15	CROSS BAR W/TWO 3" PCB SUPPORTS
CB-16	CROSS BAR W/TWO 3" PCB SUPPORTS
CB-18	CROSS BAR W/TWO 3" PCB SUPPORTS

This unique fixture offers all the *benefits of a dedicated fixture* with a *much lower cost* and the benefit of adjustability

FEATURES:

- 1 Fixtures pallet and finger conveyer machines
 - 2 No coatings are required all parts in contact with the solder wave are fabricated from a high temperature chemically resistant ESD safe composite material
 - 3 The composite materials used are light weight, chemically resistant, static dissipative, and have a thermal expansion rate very close to materials used in circuit board fabrication
 - 4 Spring loaded rails with adjustable clips allow overhanging component clearance as well as easy loading and unloading
 - 5 Stiffeners and frame sides also act as solder dams
 - 6 Adding cross bars, over head supports, adjustable clips allows virtually any pcb shape or size to be held or supported thru the wave solder process
 - 7 Frames are easily adapted to run on most semi automatic insertion machines
- ESD Safe Composites
 - Low Heat Retention
 - Excellent Flatness
 - Low Profile for Convenient PCB Loading
 - PCB Supports on Four Sides
 - Center Support for Large PCB's
 - Goldfinger Masking and Connector Clearance
 - Adjustable Rails Provide Easy PCB Loading and Unloading
 - Attachments Can be Supplied to Hold or Support Any Size or Shaped Board

ADJUSTABLE WAVE SOLDER FIXTURE

FINGER CONVEYORS

PART#	DESCRIPTION
AF-12	12" X 19" FRAME
AF-12L	12" X 24" FRAME
AF-14	14" X 19" FRAME
AF-14L	14" X 24" FRAME
AF-15	15" X 19" FRAME
AF-15L	15" X 24" FRAME
AF-16	16" X 19" FRAME
AF-16L	16" X 24" FRAME
AF-18	18" X 19" FRAME
AF-18L	18" X 24" FRAME

FINGER CONVEYORS

BOARD SIZES FOR ADJUSTABLE FIXTURES

FRAME SIZE	MAX. BOARD SIZE
12 X 19	8.5 X 15.5
14 X 19	10.5 X 15.5
15 X 19	11.5 X 15.5
16 X 19	12.5 X 15.5
18 X 19	14.5 X 15.5
12 X 24	8.5 X 20.5
14 X 24	10.5 X 20.5
15 X 24	11.5 X 20.5
16 X 24	12.5 X 20.5
18 X 19	14.5 X 15.5

*Larger board sizes can fit frames with minor modifications upon request

PALLET CONVEYORS

ELECTROVERT

PART#	DESCRIPTION
AF-E-12-19	ELECTROVERT 12" SOLDER POT
AF-E-14-19	ELECTROVERT 14" SOLDER POT
AF-E-18-19	ELECTROVERT 18" SOLDER POT

HOLLIS

AF-H-12-19	HOLLIS 12" SOLDER POT
AF-H-16-19	HOLLIS 16" SOLDER POT



1 Gwinnup Road, Blairstown, NJ 07825
 Phone: 908-362-5588 • Fax: 908-362-5115
www.mb-mfg.com