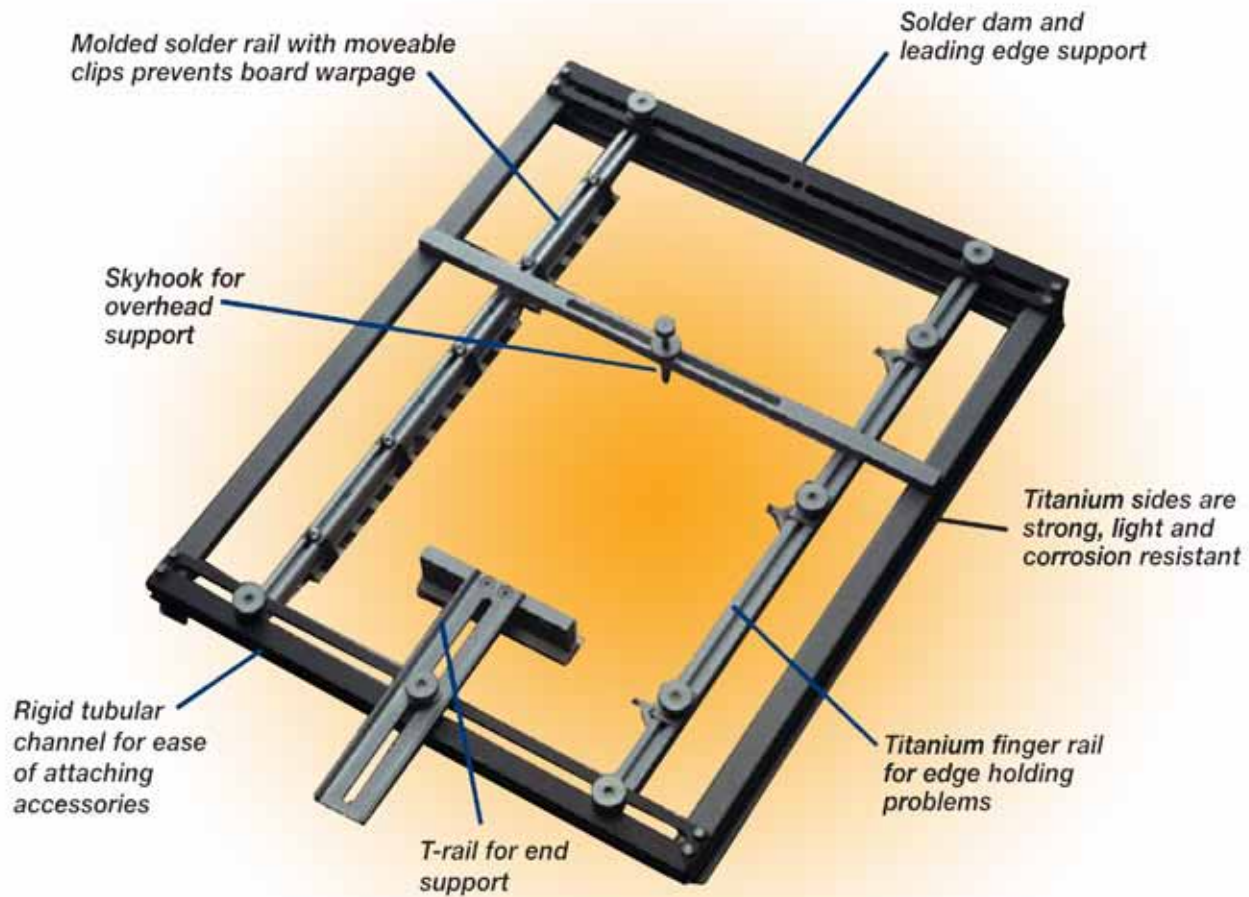




# MB Manufacturing

## Smart Solder Fixtures

MB delivers a combination of high quality, cost effective adjustable fixtures combined with our state of the art molded solder rails and a comprehensive array of highly functional accessories to enhance you machine soldering process. Ride the wave with MB adjustable fixtures.

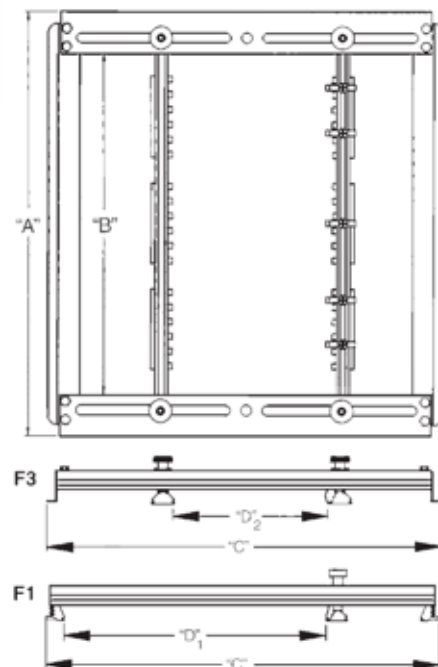


### Fixture for finger conveyors only

- Frames built in titanium (F3) or hardcoat anodized aluminum (F1).
- Rigid construction and design prevent skewing.
- F1 frame has built-in board holding grooves requiring only one movable rail to support a PCB.
- Sizes from 12" wide x 18" long to 18" wide and 22" long; custom sizes available.

Part Number	A	B	C	D
F1-12-18 or 22	18.5"	16.5"	12"	9.625"
F1-14-18 or 22	18.5"	16.5"	14"	11.625"
F1-15-18 or 22	18.5"	16.5"	15"	12.625"
F1-16-18 or 22	18.5"	16.5"	16"	13.625"
F1-18-18 or 22	18.5"	16.5"	18"	15.625"

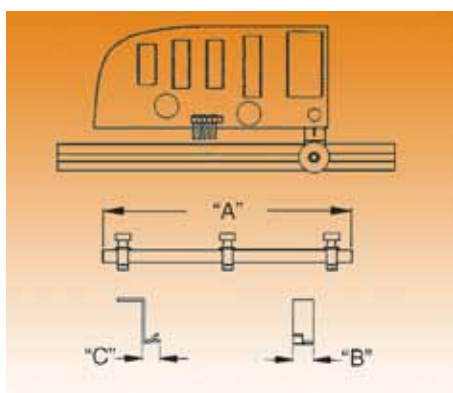
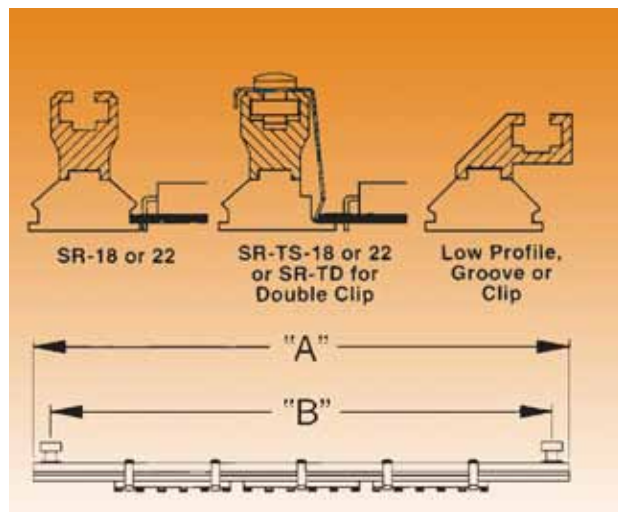
Part Number	A	B	C	D
F3-12-18	18.5"	16.5"	12"	8.75"
F3-14-18	18.5"	16.5"	14"	10.75"
F3-15-18	18.5"	16.5"	15"	11.75"
F3-16-18	18.5"	16.5"	16"	12.75"



## Molded Solder Rails

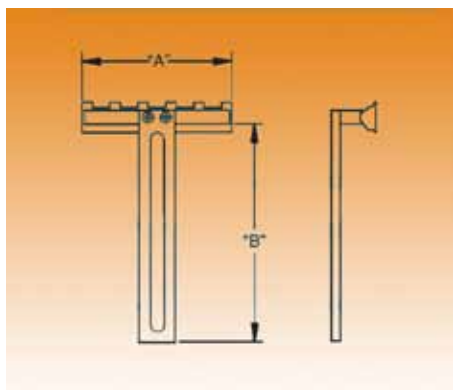
- Board supports are molded in durable liquid crystal polymer which outperforms all styles of metal solder rails.
- Molded rails mean reduced heat, increased throughput, improved edge soldering, cleaning and drainage.
- Titanium clips and supports fingers permit board expansion, fast loading and unloading and are moveable to accommodate hard to hold edges
- Available in length of 18" or 20" or custom lengths to fit other fixtures.

Description	Part No.
Double groove rail	SR-18 or 22
Groove and clip rail	SR-TS-18 or 22
Double clip rail	SR-TD-18 or 22
Thumb screw, round	CR-300
Thumb screw, oval	CR-311
Titanium clip	CR-142
Support only, groove	CRRC-494
Support only, clip and groove	CRRC-494TS
Support only, double clip	CRRC-494TD



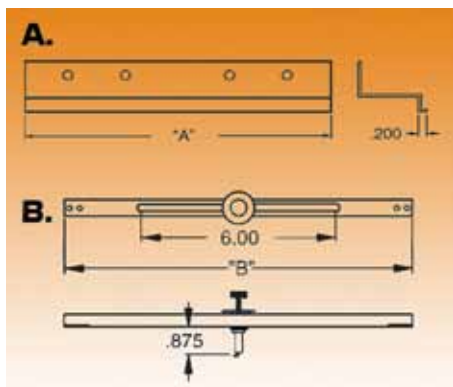
## Titanium Finger Rail for hard to hold edges

- Hold board edges with over hanging components like connectors by offsetting as illustrated.
- Three rigid, movable titanium fingers 1/2" wide (B) x 5/16" (C).
- Rail part number is TFR-18 or 22; additional standard fingers are TFRS-1/2.
- Optional narrower supports are 1/8" wide (B) with a 3/4" (C) offset; P/N TFRS-1/8.



## T-Rail for supporting wide, heavy boards

Adjustable T-rail is designed to support the rear of a board to prevent warpage. It supports 4" of the board (A) with 6" (B) of travel into the fixture and moves on the X-axis of the fixture. P/N SR-T; custom models are available.



### A. Solder Dam

Protect boards from submerging available for all sized of fixtures. Specify fixture width, for example, SD-12 is for an F1-12-18 fixture.

### B. Hook for overhead support

Pick up large boards in the center to prevent warpage. Spring-loaded titanium hook engages hole or inner edge in the board. Stays in place during soldering #SH-B (Specify 'B', fixture width).

